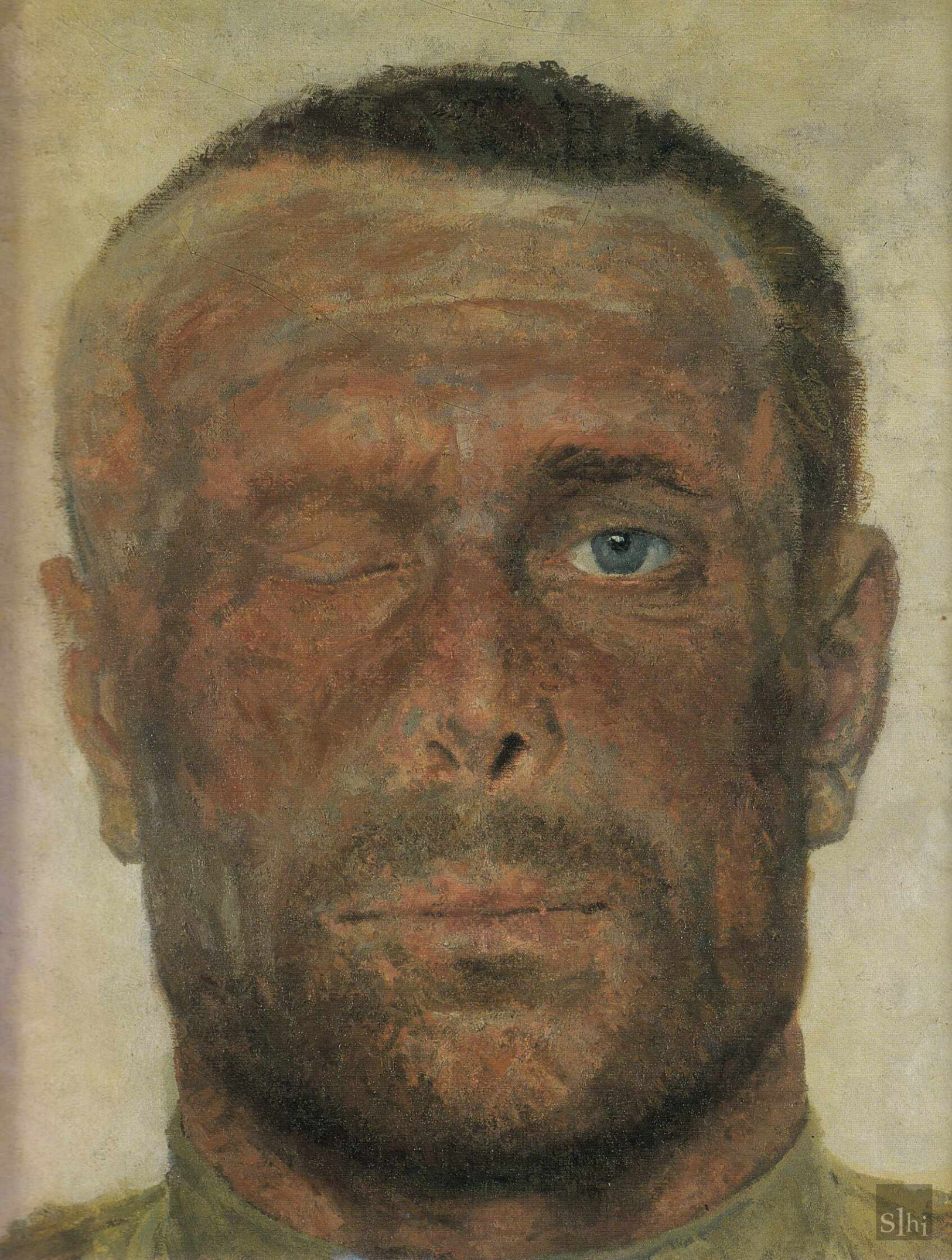




MATTHEW CULLERNE BOWN

SOCIALIST  
REALIST  
PAINTING



S O C I A L I S T  
R E A L I S T  
P A I N T I N G

MATTHEW CULLERNE BOWN

YALE UNIVERSITY PRESS  
NEW HAVEN & LONDON



Copyright © 1998 by Matthew Cullerne Bown

All rights reserved.

This book may not be reproduced,  
in whole or in part, in any form  
(beyond that copying permitted by  
Sections 107 and 108 of the U.S. Copyright Law  
and except by reviewers for the public press),  
without written permission from the publishers.

Designed by Gillian Malpass  
Printed in Singapore

**Library of Congress Cataloging-in-Publication Data**

Bown, Matthew Cullerne.  
Socialist realist painting / Matthew Cullerne Bown.

p. cm.

Includes bibliographical references and index.

ISBN 0-300-06844-1 (cl: alk, paper)

1. Socialist realism in art – Soviet Union. 2. Painting, Soviet.

3. Painting, Modern – 20th century – Soviet Union. I. Title.

ND688.B75 1998

759.7'09'04–dc21

97-28079

CIP

A catalogue record for this book is available from  
The British Library

*Frontispiece:* Geli M. Korzhev, *Wounded*, 1964.

Detail of plate 485.

Russian Museum, St Petersburg.

# CONTENTS

ACKNOWLEDGEMENTS ix

## PREFACE

Western Approaches xi

## INTRODUCTION

Russian Painting and Revolutionary Aesthetics  
before the October 1917 Revolution 1

## PART I

The Tower of Babel:  
Conflicting Forces in the Soviet Art World, 1917–1932 41

## PART II

'Realistic in Form and Socialist in Content':  
The First Years of Socialist Realism, 1932–1941 131

## PART III

'... with oil lamps, starving, in horrifying cold':  
Art in the Teeth of War, 1941–1945 205

## PART IV

Conflictlessness:  
The Academy Triumphant, 1945–1953 219

## PART V

The Thaw:  
Painting during the Khrushchev Years, 1953–1964 303

## PART VI

'... the sear, the yellow leaf':  
The Decline of Socialist Realism, 1964–1991 411

NOTES 468

LIST OF ILLUSTRATIONS 480

INDEX 492

*facing page* Detail of plate 328.



ISBN 0-300-06844-1



9 780300 068443